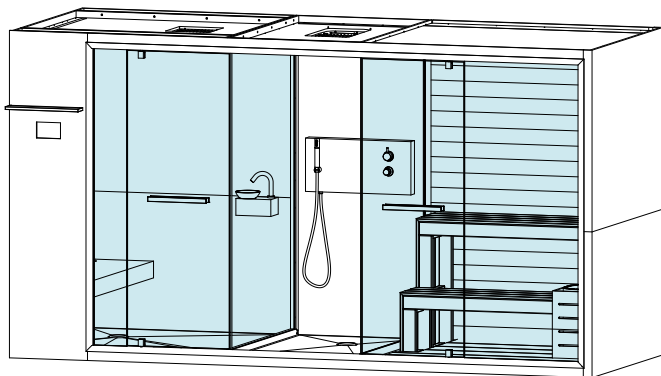


# ETHOS 400x150 H 215

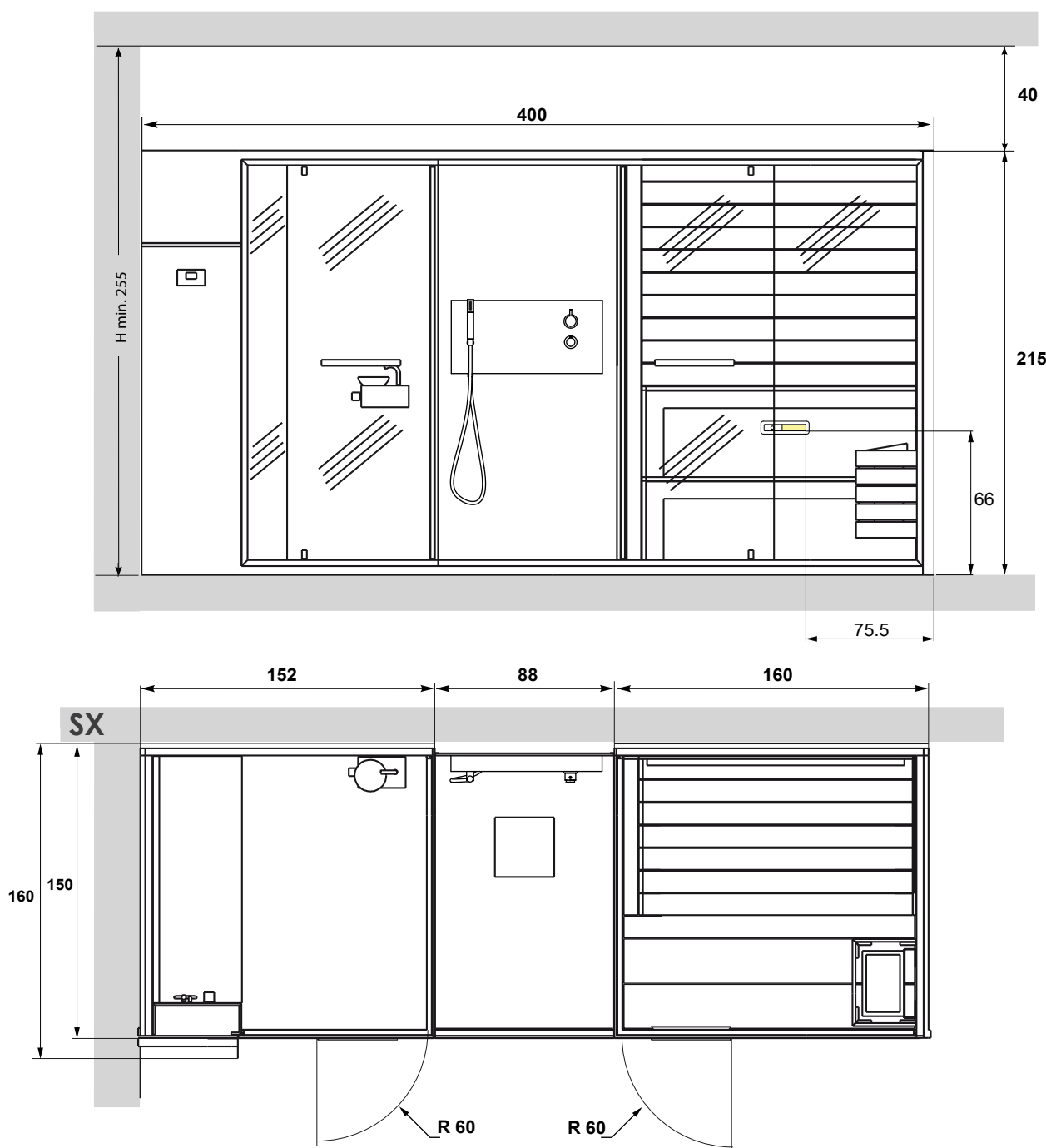
TURKISH BATH + SHOWER + SAUNA

LT VERSION

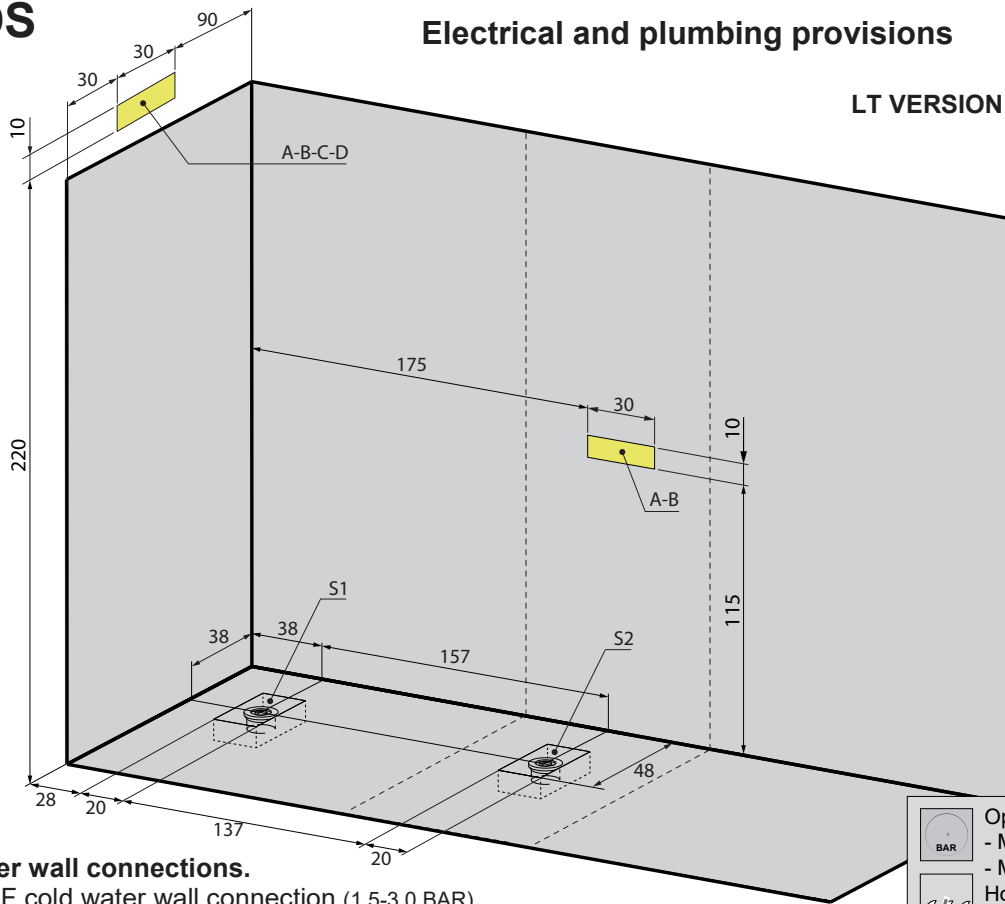
SAUNAVITA®  
calore naturale



The overall dimension values are expressed in centimetres.  
The actual dimensions may vary by ± 1 cm.



The minimum height of the wall tiles without protrusions is equal to the height of the stall.  
On the walls there cannot be any greca or quarter round decorative patterns.



#### KEY

#### A-B- Water wall connections.

A - 1/2" F cold water wall connection (1,5-3,0 BAR).

B - 1/2" F hot water wall connection (1,5-3,0 BAR).

#### C-D- Electrical tube outlet.

C - Power cable outlet (SINGLE PHASE OR THREE PHASE).

D - Equipotential cable outlet.

S1 - Turkish bath drain Ø 40mm.

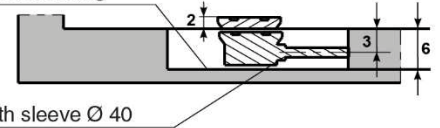
S2 - Shower drain Ø 40mm.

If the water pressure is higher than indicated, install pressure reducers.

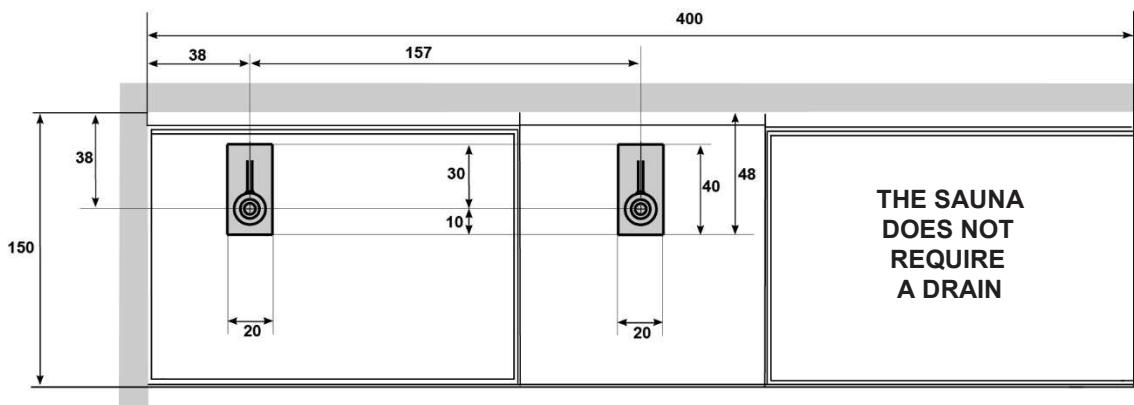
Provide shut-off cocks out of the dimensions of the product for hot and cold water closing.

	Operating pressure:
	- MIN 150 kPa (1,5 bar)
	- MAX 300 kPa (3,0 bar)
	Hot water temperature:
	- MAX 60°C (140°F)

Provide waterproof sheathing



ELECTRICAL CHARACTERISTICS:	RESISTANCES	Volts	A	Kw	Hz	MAXIMUM TEMPERATURE
TURKISH BATH	2x2000 W	230	17	4	50	50 °C
		400	10	4	50	
ELECTRICAL CHARACTERISTICS:	RESISTANCES	Volts	A	Kw	Hz	MAXIMUM TEMPERATURE
SAUNA	3x1500 W	230	21	4.5	50	100 °C
		400	7	4.5	50	



### GRUPPO GEROMIN S.r.l.

Via I° Maggio n°5 (zona Industriale)

30029 San Stino di Livenza VE

Tel. +39 0421 312249 / +39 0421 312250

http: www.gruppogeromin.com - email: info@gruppogeromin.com